

PRODUCT PROSPECTUS

# Pregnancy & Nursing



## PREGNANCY &amp; NURSING

# Table of Contents

<b>The Klaire Labs® Story</b>	3
<b>Section 1: Targeted Probiotic</b>	
Target b <sup>2™</sup>	4-5
<b>Section 2: Vitamins &amp; Minerals</b>	
Prenatal & Nursing Formula	6
Iron Chelate	7
Chewable Iron Chelate	7
Active B <sub>12</sub> -Folate	8
L-MethylFolate	8
P-5-P Plus™	9
B <sub>12</sub> Liquid (Methylcobalamin)	9
Ester-C®	10
Vitamin C	10
Vitamin C Powder	10
Calcium Citrate-Malate	11
OsteoThera™	11
Magnesium Glycinate Complex	12
Magnesium Chelate Powder	12
<b>Section 3: Urinary Tract Support</b>	
D-Mannose Plus	13
Ther-Biotic® Women's Formula	13
<b>Section 4: Digestive Support</b>	
Ther-Biotic® Complete	14
Vital-Zymes Complete	15
Vital-Zymes Forté	16
BioSpora™	17
<b>Section 5: Healthy Fats</b>	
Evening Primrose Oil	18
PhosSerine-DHA Supreme™	18
Eicosamax®	19
<b>Section 6: Stress &amp; Mood Support</b>	
The Gut-Brain Axis	20
Target gb-X™	21
SAMe 200	22
Amino Acid Complete	22
<b>Section 7: Musculoskeletal &amp; Connective Tissue</b>	
Collagen Type II	23
<b>How to Purchase</b>	23

**Caution:** If you are pregnant, nursing, have a medical condition, or taking prescription drugs, consult your healthcare professional before using this product. Keep out of reach of children.

# The Klaire Labs® Story



**According to all who knew her, Claire Farr was a tireless crusader, genuine humanitarian, and dynamic entrepreneur with a “commitment to excellence for the nutritionally aware.”**

In 1969, driven by a personal struggle with severe food allergies and environmental sensitivities, Claire Farr set out on a mission to formulate and manufacture the highest quality, hypoallergenic nutritional supplements possible. As many dedicated entrepreneurs do, Claire set up shop in her own home in Carlsbad, California and Klaire Labs® was born.

In her quest to develop a line of nutraceuticals that sensitive individuals could reliably tolerate, Claire initially focused on single ingredient formulations. Unlike most nutritional supplement manufacturers at the time, Claire purchased only pharmaceutical-grade raw ingredients selected specifically for maximum purity and bioavailability. She avoided the use of fillers and synthetic ingredients, while focusing on natural and synergistic constituents. The medical community began to take notice.

By this time, demand was growing for environmental, nutrition-focused, and integrative medical practitioners. As such, Claire and her unique products gained the attention and respect of a number of prestigious complementary medicine proponents. Word of consistently reliable outcomes spread, allowing Claire’s home-based start-up to grow into a new manufacturing facility, expanding her capabilities to include bottling and custom formulations. It was not until 1983 that Claire introduced her first probiotic, a product category that ultimately became her most successful. Klaire Labs’ Ther-Biotic® formulations remain a leading professional brand to this day.

In 2004, Klaire Labs was sold to ProThera®, Inc. ProThera, Inc. was in turn acquired by Soho Flordis International (SFI®) in 2013. SFI’s philosophy to empower healthcare providers with better, natural options aligned quite naturally with that of Claire Farr. Having dedicated their lives’ work to similar goals, the SFI founders represented a renewed commitment to, and a tangible investment in, Claire’s founding principles.

In 2017, SFI USA (comprised of the three originating companies: ProThera, Inc., Klaire Labs, and Complementary Prescriptions™) christened a new >75,000 square foot, state-of-the-art manufacturing facility, including expanded scientific and support resources, advanced quality tools, and modernized processes.

Although SFI has acquired several exceptionally discriminating, independent nutraceutical manufacturers across the globe in recent years, shared values are the common thread. In the spirit of honoring the past as we embrace the future, all products manufactured at SFI USA in Reno, Nevada are now unified under the Klaire Labs brand and guiding philosophy.



## Targeted Probiotic

### Introduction

Target b<sup>2™</sup> with Hereditum<sup>®</sup> Lc40 is a targeted probiotic designed to extend the benefit of breastfeeding and support overall infant immune health.<sup>1</sup> This strain of *Lactobacillus fermentum* (CECT5716) is clinically demonstrated to support breast health and resolve discomfort associated with mammary dysbiosis.<sup>1</sup>

### The entero-mammary pathway

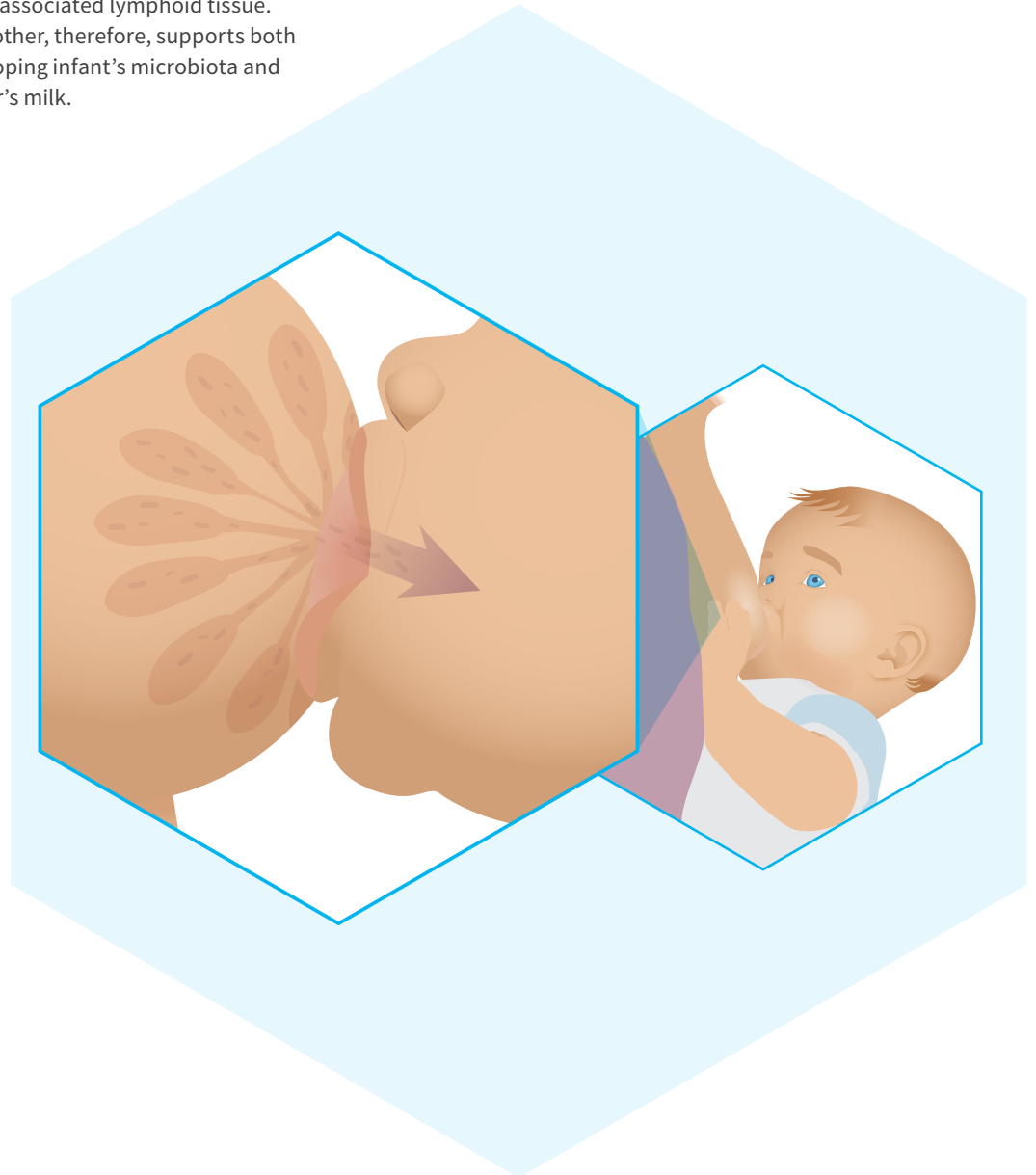
It has been shown that Lactobacilli present in the maternal gut can cross the intestinal epithelium and reach the mammary gland through the endogenous entero-mammary pathway which is responsible for the immunological benefits of breastfeeding.<sup>1</sup> It has also been demonstrated that dendritic cells can penetrate the intestinal epithelium to directly collect noninvasive bacteria from the gut lumen.<sup>2</sup> Commensal bacteria can then spread to other locations through the gut-associated lymphoid tissue. Oral supplementation by the mother, therefore, supports both mammary health and the developing infant's microbiota and immune system through mother's milk.

### Clinical findings: Hereditum Lc40

*L. fermentum* CECT5716 (Hereditum Lc40) has been shown to provide a safe and effective approach to maximizing breastfeeding comfort and duration while supporting infant immune health. Many clinical trials have validated the efficacy of *L. fermentum* in human health.

Two Hereditum Lc40 clinical trials demonstrated a significant modulation of breast milk bacterial balance compared with a control group<sup>3</sup> with an associated reduction in breast discomfort.<sup>4</sup>

A third trial compared use of Hereditum Lc40 with conventional therapy for mammary dysbiosis.<sup>4</sup> The probiotic group demonstrated nearly three times the efficacy and only one-third the recurrence rate compared to the conventional approach.



<sup>1</sup>These statements have not been evaluated by the Food and Drug Administration. These products are not intended to diagnose, treat, cure, or prevent any disease.

## Target b<sup>2</sup><sup>™</sup>

A targeted probiotic clinically demonstrated to support lactation comfort and infant immune health<sup>†</sup>

- 3B CFU *Lactobacillus fermentum* CECT5716 (Hereditum Lc40)
- Probiotic formula demonstrated to support breast health during lactation and immune health in infants<sup>†</sup>
- Clinically demonstrated to provide a safe and effective approach to reducing lactation discomfort and dysbiosis<sup>†</sup>
- Convenient shelf-stable capsules

**Suggested use:** 1 capsule, 1 to 3 times daily (3 to 9 billion CFU) or as directed by a healthcare professional.



Supplement Facts	
Serving Size 1 capsule	
Amount Per Capsule	% Daily Value
<i>Lactobacillus fermentum</i> 3 billion CFU CECT5716 (Hereditum <sup>®</sup> Lc40)	30 mg *

\*Daily Value not established.

Other ingredients: Microcrystalline cellulose, silicon dioxide, vegetarian capsule (hydroxypropyl methylcellulose, water), maltodextrin, sucrose, calcium carbonate, and sodium ascorbate.

<sup>†</sup>Hereditum<sup>®</sup> is a registered trademark of Biosearch, S.A., Spain.



CONTAINS MILK.

## TB2 90 capsules

## Target b<sup>2</sup> with Hereditum Lc40 versus conventional therapy<sup>4</sup>

Intervention	Complete Resolution	Recurrence (90 days)
Hereditum Lc40	88%	10.5%
Conventional Approach	29%	30.7%

Other research has demonstrated that *L. fermentum* CECT5716 supports immune health and is safe and well tolerated in both adults and infants.<sup>5-8</sup>



<sup>†</sup>These statements have not been evaluated by the Food and Drug Administration. These products are not intended to diagnose, treat, cure, or prevent any disease.

# Vitamins & Minerals

## Prenatal & Nursing Formula

### Enhanced multivitamin/mineral support during the childbearing years<sup>†</sup>

Prenatal & Nursing Formula focuses on key nutritional needs tailored to support reproductive health in pregnant and nursing women, and women wishing to become pregnant. This formula provides a full complement of essential vitamins and minerals in highly bioavailable, well-tolerated forms.

Recommended amounts of active folate (as Metafolin<sup>®</sup> L-5-MTHF) and active vitamin B<sub>12</sub> (as methylcobalamin) are included to support optimal folate metabolisms and methylation.<sup>†</sup>

Prenatal & Nursing Formula also contains chelates such as Ferrochel<sup>®</sup> chelated iron—a bioavailable, non-constipating form of iron.<sup>†</sup>

Vitamin D (50 mcg or 2,000 IU) to meet increased needs for fetal growth and bone development,<sup>†</sup> and phosphatidylcholine, a bioavailable form of choline that supports fetal brain development and maternal liver function help round out the formulation.<sup>†</sup>

**SUGGESTED USE:** Adults: Before, during and after pregnancy (and/or while breastfeeding) take 3 capsules daily with food or as directed by healthcare professional. Not intended for children.



## Supplement Facts

Serving Size 3 Capsules

Amount Per 3 Capsules	% Daily Value	
Vitamin A (80% (1,200 mcg RAE) as natural carotenes (beta-carotene, alpha-carotene, and beta-cryptoxanthin) from <i>D. salina</i> and 20% (300 mcg RAE) as vitamin A palmitate)	1,500 mcg RAE	115%
Vitamin C (as L-ascorbic acid)	100 mg	83%
Vitamin D <sub>3</sub> (as cholecalciferol)	50 mcg	333%
Vitamin E (as RRR-alpha-tocopheryl acid succinate, RRR-alpha-tocopherol)	28 mg	147%
Vitamin K (50% as vitamin K <sub>1</sub> (phytonadione) and 50% as vitamin K <sub>2</sub> (menaquinone-7))	60 mcg	67%
Thiamin (as thiamin HCl)	3.4 mg	243%
Riboflavin	4 mg	250%
Niacin (75% as niacinamide and 25% as niacin)	20 mg NE	111%
Vitamin B <sub>6</sub> (50% as pyridoxine HCl and 50% as pyridoxal 5'-phosphate)	15 mg	750%
Folate (as Metafolin <sup>†</sup> L-5-methyltetrahydrofolate)	1,360 mcg DFE (800 mcg)	227%
Vitamin B <sub>12</sub> (as methylcobalamin)	500 mcg	17,857%

Amount Per 3 Capsules	% Daily Value	
Biotin (D-biotin)	300 mcg	100%
Pantothenic Acid (as calcium D-pantothenate)	10 mg	143%
Choline (as phosphatidylcholine)	150 mg	27%
Calcium (as calcium citrate-malate)	100 mg	8%
Iron (as Ferrochel <sup>†</sup> ferrous bisglycinate chelate <sup>††</sup> )	27 mg	100%
Iodine (from kelp)	150 mcg	52%
Magnesium (as TRAACS <sup>®</sup> magnesium bisglycinate chelate, magnesium oxide <sup>††</sup> )	125 mg	31%
Zinc (as zinc bisglycinate chelate <sup>††</sup> )	15 mg	115%
Selenium (as selenium amino acid complex)	50 mcg	71%
Copper (as copper gluconate <sup>††</sup> )	0.5 mg	38%
Chromium (as chromium nicotinate glycinate chelate <sup>††</sup> )	75 mcg	167%
Molybdenum (as molybdenum glycinate chelate <sup>††</sup> )	10 mcg	20%
Natural Mixed Tocopherols (RRR-beta, RRR-delta, RRR-gamma) <sup>††</sup>	3.3 mg	*
Natural Mixed Carotenoids (lutein and zeaxanthin from <i>D. salina</i> )	25 mcg	*

\*% Daily Value is for Pregnant & Lactating Women.

Other ingredients: Vegetarian capsule (hydroxypropyl methylcellulose, water), microcrystalline cellulose, silicon dioxide, coconut oil powder, and natural citrus flavor.

<sup>†</sup>Metafolin<sup>®</sup> is a registered trademark of Merck KGaA, Darmstadt, Germany.

<sup>††</sup>Albion<sup>®</sup> Laboratories.



## PRN 90 capsules

**WARNING:** Accidental overdose of iron-containing products is a leading cause of fatal poisoning in children under the age of 6. KEEP OUT OF REACH OF CHILDREN. In case of accidental overdose, call a doctor or poison control center immediately.

<sup>†</sup>These statements have not been evaluated by the Food and Drug Administration. These products are not intended to diagnose, treat, cure, or prevent any disease.

## Iron Chelate

### Bioavailable bisglycinate chelate

Research indicates that ferrous bisglycinate is better absorbed and tolerated than other iron preparations.<sup>†</sup> Ferrochel® chelated iron is formulated for enhanced absorption of this essential mineral. Unlike many iron preparations, Iron Chelate is also well tolerated, gentle on the stomach, and non-constipating.<sup>†</sup> Safe for use in adults, teenagers, and pregnant and lactating women when there is a demonstrated requirement for iron supplementation. The Food and Nutrition Board recommends that pregnant women get at least 27 mg per day. Iron Chelate supplies 30 mg of elemental iron per capsule.

Made with non-GMO and Kosher ingredients.

**SUGGESTED USE: Adults:** 1 capsule daily with food or as directed by a healthcare professional. Not intended for children.



### Supplement Facts

Serving Size 1 Capsule

Amount Per Capsule	% Daily Value	
Iron (as Ferrochel® ferrous bisglycinate chelate <sup>1</sup> )	30 mg	167%

Other ingredients: Microcrystalline cellulose, vegetarian capsule (hydroxypropyl methylcellulose, water), magnesium stearate, and silicon dioxide.

<sup>1</sup>Albion® Laboratories.

### IRN30 100 capsules

**WARNING:** Accidental overdose of iron-containing products is a leading cause of fatal poisoning in children under the age of 6. KEEP OUT OF REACH OF CHILDREN. In case of accidental overdose, call a doctor or poison control center immediately.

## Chewable Iron Chelate

### Bioavailable trisglycinate chelate in a mild, natural cherry-flavored chewable tablet

Formulated for enhanced absorption, this convenient chewable tablet option contains Ferrochel® chelated iron, an exceptionally well-tolerated and mild-tasting form of this essential mineral. Unlike most iron preparations, it is gentle on the stomach and non-constipating.<sup>†</sup> Safe for use in adults, teenagers, and pregnant and lactating women when there is a demonstrated requirement for iron supplementation. This potent iron supplement supplies 30 mg of elemental iron. Perfect for individuals that have a difficult time swallowing capsules.

Made with non-GMO and Kosher ingredients

**SUGGESTED USE: Adults:** 1 tablet daily with food or as directed by a healthcare professional. Not intended for children.

### Supplement Facts

Serving Size 1 Chewable Tablet

Amount Per Chewable Tablet	% Daily Value	
Calories	10	
Total Carbohydrate	2 g	<1%**
Total Sugars	2 g	*
Includes 2 g Added Sugars		4%
Iron (as ferric trisglycinate chelate <sup>1</sup> )	30 mg	167%

<sup>\*</sup>Daily Value not established.

<sup>\*\*</sup>Percent Daily Values are based on a 2,000 calorie diet.

Other ingredients: Fructose, dextrates, silicon dioxide, natural cherry flavor, vegetable stearine, and magnesium stearate.

<sup>1</sup>Albion® Laboratories.

### IRN-CH 100 tablets

**WARNING:** Accidental overdose of iron-containing products is a leading cause of fatal poisoning in children under the age of 6. KEEP OUT OF REACH OF CHILDREN. In case of accidental overdose, call a doctor or poison control center immediately.



<sup>†</sup>These statements have not been evaluated by the Food and Drug Administration. These products are not intended to diagnose, treat, cure, or prevent any disease.



## Vitamins & Minerals (cont)

### Active B<sub>12</sub>-Folate

#### High-potency, fast-dissolving tablets

Active B<sub>12</sub>-Folate is a unique, high-concentration formula of bioavailable vitamin B<sub>12</sub> (methylcobalamin) in conjunction with biologically active folate (methylfolate; L-5-MTHF), providing enhanced absorption. Active B<sub>12</sub>-Folate provides essential nutrients for healthy brain and nervous system function, supporting healthy mood, memory, and vascular health.<sup>†</sup> Tablets may be dissolved in the mouth, chewed, or swallowed whole.

**SUGGESTED USE:** Dissolve 1 tablet daily in the mouth before swallowing or as directed by a healthcare professional.

Supplement Facts		
Serving Size 1 Tablet		
Amount Per Tablet	% Daily Value	
Folate (as Metafolin <sup>®†</sup> L-5-methyltetrahydrofolate)	1,360 mcg DFE (800 mcg)	340%
Vitamin B <sub>12</sub> (as methylcobalamin)	1,000 mcg	41,667%

Other ingredients: Mannitol, vegetable stearine, silicon dioxide, croscarmellose sodium, and magnesium stearate.

<sup>†</sup>Metafolin<sup>®</sup> is a registered trademark of Merck KGaA, Darmstadt, Germany.



#### ABF 60 tablets



### L-MethylFolate

#### Highly bioavailable folate as Metafolin<sup>®†</sup> L-5-MTHF

Many individuals do not consume enough folate in their diet. A substantial portion of the population have a genetic polymorphism that prevents them from effectively converting folate into its active, methyl form. L-MethylFolate contains Metafolin<sup>®†</sup>, a stable biologically active form of folate that has demonstrated high bioavailability and solubility. It is the preferred choice for women, children, and those with absorption or metabolic defects, helping to increase blood folate levels more efficiently than folic acid. L-5-MTHF efficiently supports methylation, DNA biosynthesis, homocysteine metabolism, brain and neural health, and normal healthy mood.<sup>†</sup> Supplies 1,700 mcg DFE (L-5-MTHF 1,000 mcg) per capsule.

**SUGGESTED USE:** 1 capsule daily with food or as directed by a healthcare professional.

Supplement Facts		
Serving Size 1 Capsule		
Amount Per Capsule	% Daily Value	
Folate (as Metafolin <sup>®†</sup> L-5-methyltetrahydrofolate)	1,700 mcg DFE (1,000 mcg)	425%

Other ingredients: Microcrystalline cellulose, vegetarian capsule (hydroxypropyl methylcellulose, water), L-leucine, cellulose, and silicon dioxide.

<sup>†</sup>Metafolin<sup>®</sup> is a registered trademark of Merck KGaA, Darmstadt, Germany.



#### MTF 60 capsules



<sup>†</sup>These statements have not been evaluated by the Food and Drug Administration. These products are not intended to diagnose, treat, cure, or prevent any disease.



## P-5-P Plus™

### Pyridoxal 5'-Phosphate with chelated magnesium

Pyridoxal 5'-Phosphate (P-5-P, or PLP) is the biologically active form of vitamin B<sub>6</sub>. It is formulated with highly bioavailable bisglycinate magnesium, an essential mineral that assists in B<sub>6</sub> metabolism. Magnesium bisglycinate chelate is well tolerated and easily and comfortably absorbed without GI tissue irritation. P-5-P Plus is a unique formula designed to support the health and function of the brain, nervous system, blood vessels, skin, and eyes.<sup>†</sup>

**SUGGESTED USE:** 1 capsule daily with food or as directed by a healthcare professional.

### Supplement Facts

Serving Size 1 Capsule

Amount Per Capsule	% Daily Value	
Vitamin B <sub>6</sub> (from 50 mg pyridoxal 5'-phosphate)	30 mg	1,765%
Magnesium (as TRAACS <sup>®</sup> magnesium bisglycinate chelate, magnesium oxide <sup>1</sup> )	100 mg	24%

Other ingredients: Vegetarian capsule (hydroxypropyl methylcellulose, water) and L-leucine.

<sup>1</sup>Albion<sup>®</sup> Laboratories.



## V911-10 100 vegetarian capsules

## B<sub>12</sub> Liquid (Methylcobalamin)

### Active, coenzyme form of vitamin B<sub>12</sub>

Methylcobalamin is the active, coenzyme form of vitamin B<sub>12</sub>, prepared as a liquid for rapid and efficient absorption. In addition to its role in supporting red blood cell function, methylcobalamin is the preferred form of B<sub>12</sub> for regulating homocysteine and for supporting numerous aspects of neurological health.<sup>†</sup>

### 1 mg

**SUGGESTED USE:** Shake well before serving. Place 1 dropperful (1.0 mL), 1 to 5 times daily in the mouth and hold for thirty seconds before swallowing or as directed by a healthcare professional.

### Supplement Facts

Serving Size 1 Dropperful (Approx. 1 mL)

Amount Per 1 Dropperful	% Daily Value	
Vitamin B <sub>12</sub> (as methylcobalamin)	1,000 mcg	41,667%

Other ingredients: Purified water, glycerin, cranberry and cinnamon flavoring, and ionic copper solution.

### CP1180 1 fluid oz. (30 mL)

### CP1181 4 fluid oz. (120 mL)

### 5 mg

**SUGGESTED USE:** Shake well before serving. Place 1 dropperful (1.0 mL) daily in mouth and hold for thirty seconds before swallowing or as directed by a healthcare professional.

### Supplement Facts

Serving Size 1 Dropperful (Approx. 1 mL)

Amount Per 1 Dropperful	% Daily Value	
Vitamin B <sub>12</sub> (as methylcobalamin)	5,000 mcg	208,333%

Other ingredients: Purified water, glycerin, cranberry and cinnamon flavoring, and ionic copper solution.

### CP1185 4 fluid oz. (120 mL)



<sup>†</sup>These statements have not been evaluated by the Food and Drug Administration. These products are not intended to diagnose, treat, cure, or prevent any disease.

## Vitamins & Minerals (cont)

### Ester-C®

#### Buffered vitamin C

A non-acidic form of vitamin C that is gentle on the stomach. Created by a unique process resulting in a patented mixture of mineral ascorbates and vitamin C metabolites. Ester-C can be taken by anyone who wishes to increase their intake of vitamin C. This non-acidic form may be more comfortably digested by those who have difficulty tolerating regular vitamin C.

**SUGGESTED USE:** 1 capsule, 1 to 2 times daily with food or as directed by a healthcare professional.

Supplement Facts		
Serving Size 1 Capsule		
Amount Per Capsule	% Daily Value	
Vitamin C (as calcium L-ascorbate) Ester-C <sup>†</sup>	500 mg	556%
Calcium (from calcium L-ascorbate) Ester-C <sup>†</sup>	55 mg	4%

Other ingredients: Vegetarian capsule (hydroxypropyl methylcellulose, water), microcrystalline cellulose, L-leucine, and silicon dioxide.

<sup>†</sup>Ester-C® and Ester-C\* are registered trademarks of the Ester-C\* Company. U.S. patent Nos. 6,878,744 and 6,197,813.

#### ETC 100 capsules



### Vitamin C

#### Pure, unbuffered vitamin C

Individual need for extra vitamin C is quite variable and these 1 g tablets supply pure, crystalline L-ascorbic acid in a convenient and affordable form. A water-soluble cellulose coating protects vitamin C from oxidation and allows for rapid tablet disintegration.

**SUGGESTED USE:** 1 tablet daily with food or as directed by a healthcare professional.

Supplement Facts		
Serving Size 1 Tablet		
Amount Per Tablet	% Daily Value	
Vitamin C (as L-ascorbic acid)	1,000 mg	1,111%

Other ingredients: Silicified microcrystalline cellulose, hydroxypropyl cellulose, stearic acid, croscarmellose sodium, silicon dioxide, magnesium stearate, and Opadry® coating.

CONTAINS TREE NUT (COCONUT).

#### VTC1 100 tablets



### Vitamin C Powder

#### Ultra-fine ascorbic acid powder

Vitamin C supports immune system function and tissue repair, acts as a powerful antioxidant protecting cells from free radicals, and is important for production of collagen and other connective tissues.<sup>†</sup> This exceptionally pure, ultra-fine unbuffered vitamin C powder contains no added ingredients.

**SUGGESTED USE:** 1/4 teaspoon daily mixed with water, juice, or food, or as directed by a healthcare professional.

Supplement Facts		
Serving Size Approx. 1/4 Teaspoon (1 gram) • Servings Per Container 250		
Amount Per 1/4 Teaspoon	% Daily Value	
Vitamin C (as L-ascorbic acid)	1,000 mg	1,111%

Other ingredients: None.

#### V701-26 8.8 oz. (250 grams) powder



<sup>†</sup>These statements have not been evaluated by the Food and Drug Administration. These products are not intended to diagnose, treat, cure, or prevent any disease.

## Calcium Citrate-Malate

### Highly bioavailable form of calcium

Calcium citrate-malate has been shown to have superior bioavailability compared to other forms of calcium, such as calcium carbonate. Calcium Citrate-Malate is formulated to provide optimal calcium absorption and is best taken with food. An essential nutrient to support healthy musculoskeletal and connective tissues, calcium also plays a vital role in supporting healthy cardiovascular, nervous, and endocrine/hormonal system function.<sup>†</sup>

**SUGGESTED USE:** 1 tablet, 1 to 4 times daily with food or as directed by a healthcare professional.



### Supplement Facts

Serving Size 1 Tablet

Amount Per Tablet	% Daily Value	
Calcium (as calcium citrate-malate complex)	250 mg	19%

Other ingredients: Cellulose, stearic acid, croscarmellose sodium, silicon dioxide, magnesium stearate, and cellulose coating.

### CCM 120 tablets

## OsteoThera™

### Multinutrient support for bone health<sup>†</sup>

OsteoThera is a unique formula that provides highly bioavailable forms of essential minerals needed to maintain healthy bones, plus synergistic vitamins to enhance calcium absorption.<sup>†</sup> This multinutrient bone support blend contains repetitive chelated calcium, as well as vitamins D and K, to support healthy bone mineral density; magnesium to support bone strength and remodeling; and boron to support mineral metabolism, steroid synthesis, and modulation of vitamin D.<sup>†</sup>

OsteoThera was formulated with a three-fold purpose: 1) to help teenagers and young adult women optimize bone mass; 2) to support and maintain bone mineral density in older women; and 3) to support pregnant women to meet their increased requirements for calcium during pregnancy.<sup>†</sup> OsteoThera is formulated to combine with average amounts of calcium and magnesium in the diet for the maintenance of healthy bone structure and integrity.<sup>†</sup>



**SUGGESTED USE:** 2 capsules or two tablets, 2 times daily with food or as directed by a healthcare professional.

### Supplement Facts

Serving Size 2 Capsules

Amount Per 2 Capsules	% Daily Value	
Vitamin D <sub>3</sub> (as cholecalciferol)	5 mcg	25%
Vitamin K (50% as vitamin K <sub>1</sub> , phytonadione, 25% as vitamin K <sub>2</sub> , menaquinone-4, and 25% as vitamin K <sub>2</sub> , menaquinone-7)	200 mcg	167%
Calcium (as calcium citrate-malate complex)	250 mg	19%
Magnesium (as TRAACS <sup>®</sup> magnesium bisglycinate chelate, magnesium oxide <sup>†</sup> )	100 mg	24%
Boron (as boron aspartate-citrate complex)	0.5 mg	*

\*Daily Value not established.

Other ingredients: **Tablets:** Microcrystalline cellulose, Opadry<sup>®</sup> coating, croscarmellose sodium, stearic acid, silicon dioxide, and magnesium stearate. **Capsules:** Vegetarian capsule (hydroxypropyl methylcellulose, water), cellulose, and L-leucine, and ascorbyl palmitate.

<sup>†</sup>Albion<sup>®</sup> Laboratories.

### OSTC 120 capsules

### OST1 120 tablets

<sup>†</sup>These statements have not been evaluated by the Food and Drug Administration. These products are not intended to diagnose, treat, cure, or prevent any disease.

## Vitamins & Minerals (cont)

### Magnesium Glycinate Complex

#### Biglycinate chelated magnesium, well tolerated and easily absorbed

Magnesium bisglycinate chelate is a highly bioavailable form of elemental magnesium that is well-tolerated even by the most sensitive individuals. For many people, the RDA is not sufficient, and most Western diets do not provide optimal amounts of this critical nutrient. Magnesium supplementation has been shown to have a wide range of clinical applications, including supporting healthy muscular and neurological function, cardiovascular and digestive function, and healthy sleep and relaxation.<sup>†</sup>

**SUGGESTED USE:** 1 capsule, 1 to 3 times daily or as directed by a healthcare professional.

Supplement Facts		
Serving Size 1 Capsule		
Amount Per Capsule	% Daily Value	
Magnesium (as TRAACS® magnesium bisglycinate chelate, magnesium oxide <sup>1</sup> )	100 mg	24%

Other ingredients: Vegetarian capsule (hydroxypropyl methylcellulose, water), magnesium stearate, and silicon dioxide.

<sup>1</sup>Albion® Laboratories.

#### V827-10 100 vegetarian capsules



### Magnesium Chelate Powder

#### Biglycinate chelated magnesium in fast-dissolving powder

This convenient powder contains magnesium bisglycinate chelate, a highly bioavailable magnesium that is well tolerated by most sensitive individuals due to the very stable chelate form. It mixes easily in water or juice and dissolves rapidly and completely. No flavors or sweeteners added.

**SUGGESTED USE:** 1 scoop, 1 to 2 times daily mixed with water, juice, food, or as directed by healthcare professional.

Supplement Facts		
Serving Size 1 Scoop (Approx. 2.5 grams) • Servings Per Container 120		
Amount Per Scoop	% Daily Value	
Magnesium (as TRAACS® magnesium bisglycinate chelate <sup>1</sup> )	200 mg	48%

Other ingredients: Citric acid and silicon dioxide.

<sup>1</sup>Albion® Laboratories.

#### MCP 10.58 oz. (300 grams) powder



<sup>†</sup>These statements have not been evaluated by the Food and Drug Administration. These products are not intended to diagnose, treat, cure, or prevent any disease.

## Urinary Tract Support

### D-Mannose Plus

#### Convenient powder formula with cranberry extract and vitamin C

Mannose (D-Mannose) is a sugar monomer that helps maintain urinary tract health.<sup>†</sup> It binds undesirable microorganism cell wall lectins preventing colonization of the urinary tract mucosa and encouraging prompt excretion through the urine.<sup>†</sup>

**SUGGESTED USE:** 1 level teaspoon, 1 to 5 times daily mixed with cold water, juice, or food, or as directed by a healthcare professional.



#### Supplement Facts

Serving Size 1 Level Teaspoon (Approx. 4.8 grams) • Servings Per Container 30

Amount Per 1 Level Teaspoon	% Daily Value	
Calories	15	
Total Carbohydrate	4 g	2%**
Total Sugars	3 g	*
Includes 2g Added Sugars		4%
Sugar Alcohol	1 g	*
Vitamin C (as L-ascorbic acid)	60 mg	67%
D-Mannose	1,500 mg	*
Cranberry Concentrate ( <i>Vaccinium macrocarpon</i> ) (fruit)	800 mg	*

\*Daily Value not established.

\*\*Percent Daily Values based on a 2,000 calorie diet.

Other ingredients: Xylitol, natural mixed berry flavor, citric acid, silicon dioxide, and stevia leaf extract.

#### CP5504 5.08 oz. (144 grams) powder

### Ther-Biotic® Women's Formula

#### Supports genitourinary microbiota health<sup>†</sup>

Ther-Biotic Women's Formula is a hypoallergenic blend of 10 species specifically designed to support a woman's genitourinary system.<sup>†</sup> Lactobacilli modulate the mucosal immune response to undesirable microorganisms, secrete biosurfactants to block their adherence and disrupt biofilm formation, and produce lactic acid to promote a healthy vaginal pH.<sup>†</sup> Each capsule provides 25 billion CFU protected by our proprietary InTactic® technology for maximum viability.

**SUGGESTED USE:** Adults: 1 capsule daily with food or as directed by a healthcare professional. Children: As directed by a healthcare professional.

#### Supplement Facts

Serving Size 1 Capsule

Amount Per Capsule	% Daily Value	
Probiotic Blend (25 billion CFU) in a base of inulin (derived from chicory root)	300 mg	*
<b>Lactobacillus species</b>	20 billion CFU	*
<i>Lactobacillus acidophilus</i>		
<i>Lactobacillus brevis</i>		
<i>Lactobacillus rhamnosus</i>		
<i>Lactobacillus gasseri</i>		
<i>Lactobacillus casei</i>		
<i>Lactobacillus salivarius</i>		
<i>Lactobacillus plantarum</i>		
<b>Bifidobacterium species</b>	5 billion CFU	*
<i>Bifidobacterium bifidum</i>		
<i>Bifidobacterium breve</i>		
<i>Bifidobacterium longum</i>		

\*Daily Value not established.

Other ingredients: Vegetarian capsule (hydroxypropyl methylcellulose, water), InTactic® proprietary polysaccharide complex, and L-leucine.



#### K-TWF 60 vegetarian capsules

<sup>†</sup>These statements have not been evaluated by the Food and Drug Administration. These products are not intended to diagnose, treat, cure, or prevent any disease.

# Digestive Support

## Ther-Biotic® Complete

### Our most comprehensive, maximum-support probiotic formula

Ther-Biotic Complete is a robust, broad-spectrum, hypoallergenic blend of 12 probiotic species in a base of inulin. Designed to supply a complete profile of synergistic and complementary species, each capsule provides 25 billion CFU and each 0.25 teaspoon (1 gram) provides 100 billion CFU protected by our proprietary InTactic® technology for maximum viability throughout the intestinal tract.

- Maximum probiotic support with colonizing and transient strains
- Clean and hypoallergenic for optimal results
- Available in 25B CFU capsules or 100B CFU powder



### Capsules

**SUGGESTED USE: Adults:** 1 capsule daily with food or as directed by a healthcare professional. **Children:** As directed by a healthcare professional.

#### Supplement Facts

Serving Size 1 Capsule

Amount Per Capsule	% Daily Value	
Probiotic Blend (25 billion CFU) in a base of inulin (derived from chicory root)	280 mg	*
<i>Lactobacillus rhamnosus</i>	6.0 billion CFU	*
<i>Bifidobacterium bifidum</i>	5.0 billion CFU	*
<i>Lactobacillus acidophilus</i>	3.0 billion CFU	*
<i>Lactobacillus casei</i>	2.5 billion CFU	*
<i>Lactobacillus plantarum</i>	2.0 billion CFU	*
<i>Lactobacillus salivarius</i>	2.0 billion CFU	*
<i>Bifidobacterium longum</i>	1.0 billion CFU	*
<i>Streptococcus thermophilus</i>	1.0 billion CFU	*
<i>Lactobacillus bulgaricus</i>	1.0 billion CFU	*
<i>Lactobacillus paracasei</i>	0.5 billion CFU	*
<i>Bifidobacterium lactis</i>	0.5 billion CFU	*
<i>Bifidobacterium breve</i>	0.5 billion CFU	*

\*Daily Value not established.

Other ingredients: Vegetarian capsule (hydroxypropyl methylcellulose, water), InTactic® proprietary polysaccharide complex, and L-leucine.

**V775-06 60 vegetarian capsules**

**V775-12 120 vegetarian capsules**

### Powder

**SUGGESTED USE: Adults:** 1/4 teaspoon daily with food or as directed by a healthcare professional. **Children:** As directed by a healthcare professional.

#### Supplement Facts

Serving Size 1/4 Teaspoon (Approx. 1 gram) • Servings Per Container 60

Amount Per 1/4 Teaspoon	% Daily Value	
Probiotic Blend (100 billion CFU) in a base of inulin (derived from chicory root) and InTactic® proprietary polysaccharide complex	1 g	*
<i>Lactobacillus rhamnosus</i>	24.0 billion CFU	*
<i>Bifidobacterium bifidum</i>	20.0 billion CFU	*
<i>Lactobacillus acidophilus</i>	12.0 billion CFU	*
<i>Lactobacillus casei</i>	10.0 billion CFU	*
<i>Lactobacillus plantarum</i>	8.0 billion CFU	*
<i>Lactobacillus salivarius</i>	8.0 billion CFU	*
<i>Bifidobacterium longum</i>	4.0 billion CFU	*
<i>Streptococcus thermophilus</i>	4.0 billion CFU	*
<i>Lactobacillus bulgaricus</i>	4.0 billion CFU	*
<i>Lactobacillus paracasei</i>	2.0 billion CFU	*
<i>Bifidobacterium lactis</i>	2.0 billion CFU	*
<i>Bifidobacterium breve</i>	2.0 billion CFU	*

\*Daily Value not established.

Other ingredients: None.

**K-TCP 2.25 oz. (64 grams) powder**



## Vital-Zymes Complete

### Multi-enzyme supplement for extensive digestive support†

Our bestselling multi-enzyme formulation offers a comprehensive range of microbial-derived enzymes, together with lysozyme, that work in concert to support normal enzyme activities such as macro-digestion, microbiota balance, and inflammation metabolism.<sup>†</sup> The broad-spectrum combination of enzymes in Vital-Zymes Complete supports the complete breakdown, absorption, and utilization of macronutrients from a wide spectrum of foods, including proteins and peptides, complex carbohydrates, disaccharides and sugars, lipids/fats, and vegetable fibers.<sup>†</sup> As such, Vital-Zymes Complete is an important dietary adjunct for individuals who seek to improve nutrient uptake, and for those with occasional indigestion resulting in gas and bloating.<sup>†</sup>

### Capsules

**SUGGESTED USE:** 2 capsules at the beginning of each meal or as directed by a healthcare professional.

Supplement Facts	
Serving Size 2 Capsules	
Amount Per 2 Capsules	% Daily Value
<b>Comprehensive Enzyme Blend</b>	<b>800 mg*</b>
With the following minimum enzyme activity:	
<b>Carbohydrate Specific Enzymes</b>	
Amylase	1,830 BAUΔ
Alpha-Amylase	100 DUΔ
Glucoamylase (with isomaltase side chain activity)	30 AGUΔ
<b>Sugar Specific Enzymes</b>	
Lactase	1,500 ALUΔ
Sucrase (invertase)	400 SUΔ
Maltase (diastase)	200 DP <sup>†</sup> Δ
Pullulanase (debranching enzyme with isomaltase side chain activity)	25 UΔ
<b>Vegetable/Plant Fiber Specific Enzymes</b>	
Cellulase	500 CUΔ
Hemicellulase/Pectinase/Phytase Complex	200 HSUΔ
Phytase	10 PUΔ
Beta-Glucanase	20 BGIΔ
Alpha-Galactosidase	1,000 AGSUΔ
Galactomannase	200 HCUΔ
<b>Protein and Peptide Specific Enzymes</b>	
Acid Protease	50 SAPUΔ
Alkaline Protease	50 PCΔ
Protease/Peptidase Complex with endopeptidase, exopeptidase, and DPP-IV activity	40,000 HUTΔ
<b>Fat Specific Enzyme</b>	
Lipase	1,500 FIPUΔ
<b>Other Enzymes</b>	
Lysozyme (from egg white)	100,000 SHUΔ
Serratia peptidase (enteric-coated) <sup>†</sup>	2,500 SPUΔ

\*Daily Value not established.

Other ingredients: Vegetarian capsule (hydroxypropyl methylcellulose, water), coconut oil powder, and cellulose.

ΔUnits are those used in edition nine (IX) of the Food Chemicals Codex (FCC).  
<sup>†</sup>Peptizyme SP<sup>®</sup>, a registered trademark of Specialty Enzymes.

### K-VZM 120 vegetarian capsules



### Chewable Tablets

**SUGGESTED USE:** 2 tablets at the beginning of each meal or as directed by a healthcare professional.

Supplement Facts	
Serving Size 2 Tablets	
Amount Per 2 Tablets	% Daily Value
<b>Comprehensive Enzyme Blend</b>	<b>320 mg*</b>
With the following enzyme activity:	
<b>Carbohydrate Specific Enzymes</b>	
Amylase	732 BAUΔ
Alpha-Amylase	40 DUΔ
Glucoamylase (with isomaltase side chain activity)	12 AGUΔ
<b>Sugar Specific Enzymes</b>	
Lactase	600 ALUΔ
Sucrase (invertase)	160 SUΔ
Maltase (diastase)	80 DP <sup>†</sup> Δ
Pullulanase (debranching enzyme with isomaltase side chain activity)	10 UΔ
<b>Vegetable/Plant Fiber Specific Enzymes</b>	
Cellulase	200 CUΔ
Hemicellulase/Pectinase/Phytase Complex	80 HSUΔ
Phytase	4 PUΔ
Beta-Glucanase	8 BGIΔ
Alpha-Galactosidase	40 AGSUΔ
Galactomannase	80 HCUΔ
<b>Protein and Peptide Specific Enzymes</b>	
Acid Protease	20 SAPUΔ
Alkaline Protease	20 PCΔ
Protease/Peptidase Complex with endopeptidase, exopeptidase, and DPP-IV activity	16,000 HUTΔ
<b>Fat Specific Enzyme</b>	
Lipase	600 FIPΔ
<b>Other Enzymes</b>	
Serratia peptidase (enteric-coated) <sup>†</sup>	1,000 SPU

\*Daily Value not established.

Other ingredients: Xylitol, mannitol, stearic acid, silicon dioxide, and natural cherry flavor.

ΔUnits are those used in edition nine (IX) of the Food Chemicals Codex (FCC).  
<sup>†</sup>Peptizyme SP<sup>®</sup>, a registered trademark of Specialty Enzymes.

### K-VCH 180 chewable tablets

† These statements have not been evaluated by the Food and Drug Administration. These products are not intended to diagnose, treat, cure, or prevent any disease.



## Digestive Support (cont)

### Vital-Zymes Forté

#### Broad-acting multi-enzyme formula

A broad-spectrum enzyme formulation for routine daily use or as needed, Vital-Zymes Forté is a blend of 13 microbial- and plant-derived enzymes that can assist breakdown of proteins, fats, complex carbohydrates, sugars, and fibers. Enzymes with DPP-IV activity are added specifically for the breakdown of gluten and casein peptides. The enzymes in Vital-Zymes Forté provide maintenance-level support of digestive and intestinal health and relieve occasional gas and bloating.<sup>†</sup> Mid-range amounts of lactase (dairy/lactose-specific) and alpha-galactosidase (to digest glycolipids and glycoproteins in legumes, beans, cruciferous vegetables, and other foods) are included to suit individuals who have difficulty digesting these foods.<sup>†</sup> Use of microbial- and plant-derived enzymes in this formulation provides activity across the broad range of intestinal pH conditions.

**SUGGESTED USE:** 2 capsules at the beginning of each meal or as directed by a healthcare professional.



### Supplement Facts

Serving Size 2 Capsules

Amount Per 2 Capsules	% Daily Value
Enzyme Blend	496 mg *
Alpha-Amylase	15,000 DU $\Delta$
Glucoamylase	27 AGU $\Delta$
Protease/Peptidase Complex with endopeptidase, exopeptidase, and DPP-IV activity	40,000 HUT $\Delta$ 36 AP $\Delta$ 20 SAPU $\Delta$
Cellulase	800 CU $\Delta$
Invertase	200 SU $\Delta$
Bromelain	550,000 PU $\Delta$
Lactase	1,500 ALU $\Delta$
Alpha-Galactosidase	120 GalU $\Delta$
Lipase	500 FIP $\Delta$
Hemicellulase, Beta-Glucanase, and Phytase blend	800 MU $\Delta$

\*Daily Value not established.

Other ingredients: Vegetarian capsule (hydroxypropyl methylcellulose, water), cellulose, and L-leucine.

$\Delta$ Units are those used in edition nine (IX) of the Food Chemicals Codex (FCC).

### S221-C120 120 vegetarian capsules



<sup>†</sup>These statements have not been evaluated by the Food and Drug Administration. These products are not intended to diagnose, treat, cure, or prevent any disease.

## Vital-Zymes Product Comparison

Product	Vital-Zymes Complete	Vital-Zymes Chewable	Vital-Zymes Forté
<b>General Use</b>	Full complement of high-activity enzymes	Moderate amounts of high-activity enzymes	Broad spectrum, maintenance-level support
<b>Serving Size</b>	2 capsules	2 tablets	2 capsules
<b>Acid Protease</b>	50 SAPU	20 SAPU	
<b>Alkaline Protease</b>	50 PC	20 PC	
<b>Alpha-Amylase</b>	100 DU	40 DU	15,000 DU
<b>Alpha-Galactosidase</b>		40 AGSU	120 GalU
<b>Amylase</b>	1,830 BAU	732 BAU	
<b>Beta-Glucanase</b>	20 BGU	8 BGU	
<b>Bromelain</b>			550,000 PU
<b>Cellulase</b>	500 CU	200 CU	800 CU
<b>Galactomannase</b>	200 HCU	80 HCU	
<b>Glucoamylase</b>	30 AGU	12 AGU	27 AGU
<b>Hemicellulase/Pectinase/Phytase</b>	200 HSU	80 HSU	800 MU
<b>Lactase</b>	1,500 ALU	600 ALU	1,500 ALU
<b>Lipase</b>	1500 FIP	600 FIP	500 FIP
<b>Lysozyme</b>	100,000 SHU		
<b>Maltase</b>	200 DP	80 DP	
<b>Phytase</b>	10 PU	4 PU	
<b>Protease/Peptidase Complex (DPP-IV activity)</b>	40,000 HUT	16,000 HUT	40,000 HUT
<b>Pullulanase</b>	25 U	10 U	
<b>Serratia Peptidase</b>	2,500 SPU	1,000 SPU	
<b>Sucrase/Invertase</b>	400 SU	160 SU	200 SU

## BioSpora™

### A combination of two spore-forming probiotics

BioSpora is a powerful blend of genetically certified *Bacillus coagulans* and *B. subtilis* species formulated to provide unique probiotic support of healthy gastrointestinal and immune function.<sup>†</sup> Spore-forming bacilli have often been referred to as soil-based microorganisms because of their ubiquitous presence in the earth. Although found in the human GI tract, spore-forming bacilli have long been considered incidental, transient bacteria. However, research shows that *Bacillus* species are present in the GI tract in numbers higher than can be explained by ingestion alone. Germination of *Bacillus* spores within the human small intestine and transient colonization is now thought to be part of the normal life cycle of human-associated *Bacillus* species providing specific stimuli for healthy GI and immune system development and function. Each capsule of BioSpora supplies a total of 2 billion CFU of *B. coagulans* and *B. subtilis* spores positively identified through independent 16S ribosomal RNA gene sequencing. The spores are resistant to extremes of heat, ultraviolet radiation, solvents, hydrogen peroxide, and enzymes. The spores withstand stomach acid and germinate in the small intestine within 6 hours of ingestion. Ingested *B. coagulans* and *B. subtilis* reside in the human GI tract for up to 7 days following consumption. BioSpora is recommended for enhanced support of normal GI and immune function.<sup>†</sup> It is certified free of casein, gluten, and soy. BioSpora does not require refrigeration.



**SUGGESTED USE:** 1 capsule daily with food or as directed by a healthcare professional.

Supplement Facts	
Serving Size 1 Capsule	
Amount Per Capsule	% Daily Value
Probiotic Blend (2 billion CFU) in a base of cellulose	260mg *
<i>Bacillus coagulans</i>	
<i>Bacillus subtilis</i>	

\*Daily Value not established.

Other ingredients: Vegetarian capsule (hydroxypropyl methylcellulose, water) and coconut oil powder.

## K-BSP-12 120 vegetarian capsules

<sup>†</sup>These statements have not been evaluated by the Food and Drug Administration. These products are not intended to diagnose, treat, cure, or prevent any disease.

# Healthy Fats

## Evening Primrose Oil

### Bioactive GLA

The seed oil of Evening Primrose (*Oenothera biennis*) provides gamma-linolenic acid (GLA), an essential omega-6 fatty acid. Cold-pressed without hexane or other solvents, these softgels contain 76 mg of biologically active GLA. Evening primrose supports cartilage and joint function, neuroendocrine and cognitive health, skin and connective tissue health, and helps maintain nerve function and cardiovascular health.<sup>†</sup>

**SUGGESTED USE:** 1 to 2 times daily with food or as directed by a healthcare professional.

Supplement Facts		
Serving Size 1 Softgel		
Amount Per Softgel	% Daily Value	
Calories	10	
Calories from Fat	10	
Total Fat	1 g	1%**
Polyunsaturated Fat	1 g	*
Evening Primrose Seed Oil (cold-pressed)	1,300 mg	*
Gamma-Linolenic Acid (GLA)	76 mg	*
Linoleic Acid	544 mg	*
Oleic Acid	49.9 mg	*

\*Daily Value not established.  
\*\*Percent Daily Values are based on a 2,000 calorie diet.

Other ingredients: Gelatin, glycerin, and water.

### EPO 100 softgels



## PhosSerine-DHA Supreme™

### Natural support for brain health<sup>†</sup>

PhosSerine-DHA Supreme is a conjugated phosphatidylserine-Omega-3 complex that closely resembles naturally occurring (brain) PS, the compound on which omega clinical studies were based. Clinical research has shown it can increase omega-3's bioavailability to the brain and act synergistically with DHA for improved cognitive performance.<sup>†</sup>

**SUGGESTED USE:** 1 capsule up to five times per day.

Supplement Facts		
Serving Size 1 Capsule		
Amount Per Capsule	% Daily Value	
Phosphatidylserine-DHA Complex (Sharp-PS® Gold <sup>†</sup> )	269 mg	*
PS (phosphatidylserine)	115 mg	*
DHA (docosahexaenoic acid)	16 mg	*

\*Daily Value not established.

Other ingredients: Microcrystalline cellulose, vegetarian capsule (hydroxypropyl methylcellulose, water, maltodextrin), maltodextrin, silicon dioxide, and magnesium stearate.

<sup>†</sup>Sharp-PS® and Sharp-PS® GOLD are registered trademarks of Enzymotec Ltd.



CONTAINS SOY AND FISH (HERRING).

### CR10360 60 vegetarian capsules



<sup>†</sup>These statements have not been evaluated by the Food and Drug Administration. These products are not intended to diagnose, treat, cure, or prevent any disease.

## Eicosamax®

### Our highest-strength, ultra-pure fish oil

Eicosamax, our extra-strength fish oil supplement provides highly concentrated 70% omega-3 essential fatty acids (EFA) for musculoskeletal, joint, brain, and mood support. It is purified through advanced molecular distillation for optimal freshness and freedom from contaminants. Proprietary processing ensures removal of residual fish proteins and other compounds, providing an exceptional fish oil with a fresh, non-fishy taste. Additionally, Eicosamax includes antioxidants vitamin E and rosemary oil to maintain stability and protect against peroxide formation that can affect taste and reduce health benefits.

The high nutritional density of Eicosamax offers the added convenience of fewer per day, which is particularly desirable when high amounts of omega-3 fatty acids are required to support cardiovascular health, neuroendocrine and cognitive health, and immune functions.

Each batch of Eicosamax is analyzed by an independent, third-party laboratory to verify purity, potency, and freedom from contaminants such as heavy metals, pesticides, solvents, and PCBs. Cholesterol-free. Available in softgels and liquid form.



### Softgels

**SUGGESTED USE:** 1 softgel, 1 to 3 times daily with food or as directed by a healthcare professional.

Supplement Facts			
Serving Size 1 Softgel			
Amount Per Softgel		% Daily Value	
Calories		10	
Calories from Fat		10	
Total Fat		1g	1%**
Saturated Fat		<0.5g	<1%**
Polyunsaturated Fat		1g	*
Marine Fish Oil Concentrate (anchovy, sardine, and/or mackerel)	1,000 mg		*
Supplying the following omega-3 fatty acids:	Compound Weight $\Delta$	FFA Weight $\Delta\Delta$	
Eicosapentaenoic Acid (EPA)	360mg	330mg	*
Docosahexaenoic Acid (DHA)	270mg	250mg	*

\*Daily Value not established.  
\*\*Percent Daily Values are based on a 2,000 calorie diet.

Other ingredients: Gelatin, water, glycerin, lemon oil, rosemary oil, canola oil, soybean oil, mixed tocopherols, and citric acid.

$\Delta$ Amounts reported as weight of the fatty acid compound.

$\Delta\Delta$ Amounts reported as free fatty acid (FFA) equivalents by weight in accordance with GOED Voluntary Monograph.

### EMX 60 softgels

### EMX120 120 softgels

## Eicosamax Supplement Comparison

Product	Serving Size	Total EPA/DHA (Area%)*	Amount (weight) of Fatty Acid Compound** PER SERVING	Actual "Elemental" Fatty Acid Content*** PER SERVING
Eicosamax	1 g softgel	70%	360 mg EPA / 270 mg DHA	330 mg EPA / 250 mg DHA
Eicosamax Liquid	1/2 teaspoon	70%	800 mg EPA / 600 mg DHA	734 mg EPA / 556 mg DHA

\*Area % values compare content of EPA and DHA to other fatty acids that may be present in the fish oil. Amounts do not directly correlate with milligrams of EPA/DHA per gram of oil.

\*\*Weight of fatty acid compound includes weight of material bound to the fatty acid.

\*\*\*Actual weight of EPA and DHA expressed as fatty free acid (FFA) equivalents.

**NOTE:** When comparing potencies with other brands, it is important to note that some fish oil softgel products list the EPA and DHA content in TWO softgels. KlaiRE Labs labels show fatty acid amounts in ONE fish oil softgel.

### Liquid

**SUGGESTED USE:** 1/2 teaspoon daily with food or as directed by a healthcare professional.

Supplement Facts			
Serving Size 1/2 Teaspoon (Approx. 2.5 mL) • Servings Per Container 48			
Amount Per 1/2 Teaspoon		% Daily Value	
Calories		20	
Calories from Fat		20	
Total Fat		2g	3%**
Polyunsaturated Fat		2g	*
Marine Fish Oil Concentrate (anchovy, sardine and/or mackerel)		2,222mg	*
Supplying the following omega-3 fatty acids:	Compound Weight $\Delta$	FFA Weight $\Delta\Delta$	
Eicosapentaenoic Acid (EPA)	800 mg	734 mg	*
Docosahexaenoic Acid (DHA)	600 mg	556 mg	*

\*Daily Value not established.  
\*\*Percent Daily Values are based on a 2,000 calorie diet.

Other ingredients: Natural mixed tocopherol vitamin E, natural lemon oil, and rosemary extract.

$\Delta$ Amounts reported as weight of the fatty acid compound.

$\Delta\Delta$ Amounts reported as free fatty acid (FFA) equivalents by weight in accordance with GOED Voluntary Monograph.

### EML 4 fluid oz. (120 mL)

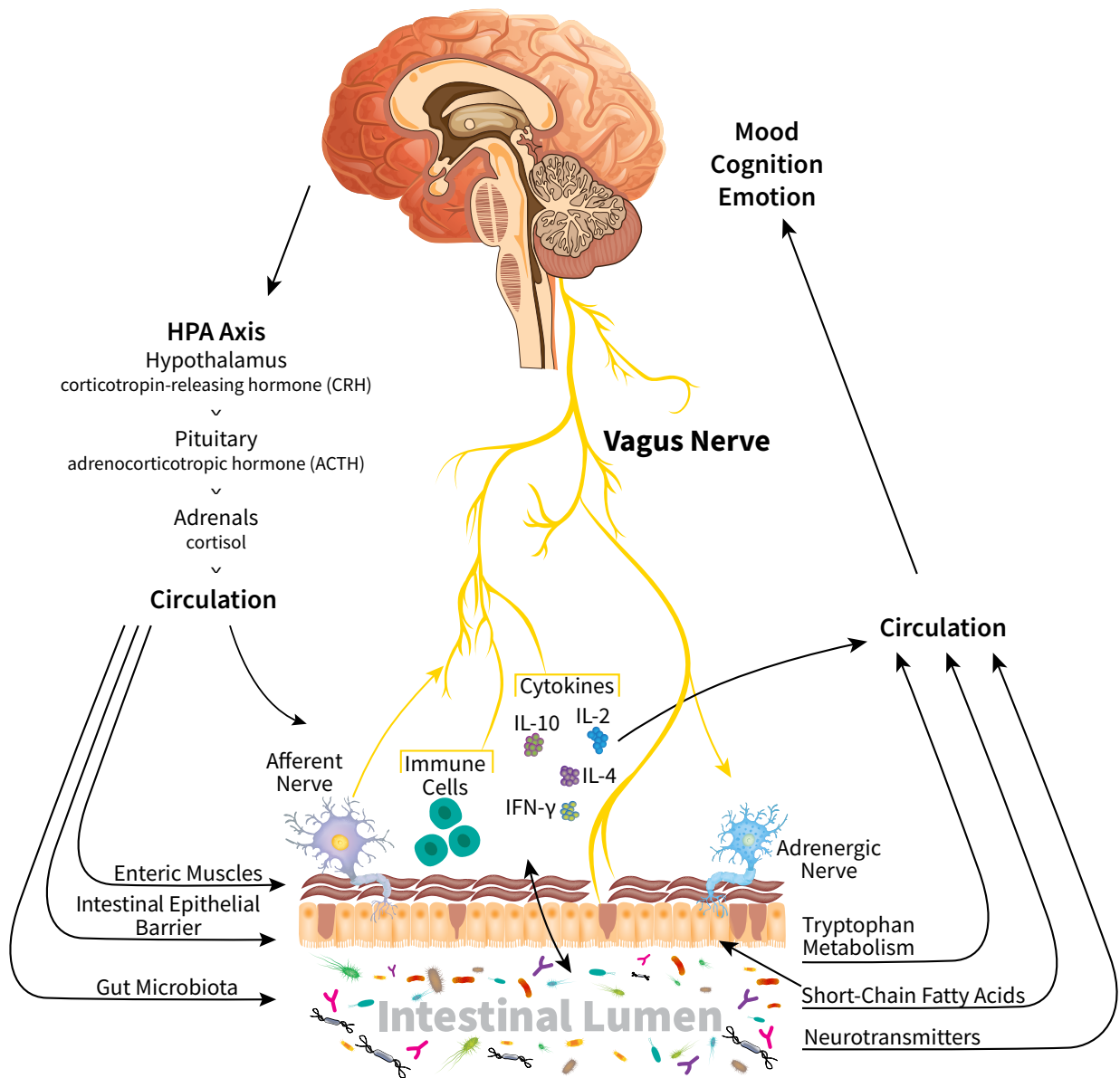
†These statements have not been evaluated by the Food and Drug Administration. These products are not intended to diagnose, treat, cure, or prevent any disease.

# Stress & Mood Support

## The Gut-Brain Axis

The gut-brain axis is a communication network that links the central nervous system (CNS) with the enteric nervous system (ENS). The anatomical network includes the brain and spinal cord, autonomic nervous system (ANS), hypothalamic-pituitary-adrenal (HPA) axis, and the innervation of the enteric nervous system. Both neural and hormonal routes of communication allow the brain to influence intestinal activities, including activity of

functional effector cells (i.e., immune cells, epithelial cells, enteric neurons, smooth muscle cells, interstitial cells, etc.). Moreover, the gut microbiome has demonstrated a profound influence over the central and peripheral nervous systems through several mechanisms, including tight junction barrier function support, cytokine production, inflammatory modulation, and serotonin production.<sup>9,10</sup>



<sup>†</sup>These statements have not been evaluated by the Food and Drug Administration. These products are not intended to diagnose, treat, cure, or prevent any disease.

## Target gb-X™

### A targeted probiotic blend clinically demonstrated to support mood†

Target gb-X is a probiotic supplement specifically designed to support positive mood by influencing the gut-brain axis through the microbiome.† It is powered by Ecologic BARRIER, a 5B CFU blend of 9 probiotic strains, that has been clinically shown to decrease overall cognitive reactivity to sad mood, rumination, negative thoughts, and aggressive thoughts.†<sup>11</sup> Heightened cognitive reactivity to sad mood is an established risk factor for more serious mood alterations in otherwise healthy individuals, and is therefore considered an important target for interventions.

- Powered by Ecologic BARRIER, a 5B CFU blend of 9 probiotic strains
- Protected by PROBIOACT® Technology for optimal efficacy and shelf-stability
- Hypoallergenic, non-GMO powder in single-serving sachets

### Target gb-X Mechanism

Target gb-X with Ecologic BARRIER was specifically designed to influence the gut-brain axis through defined mechanisms including strengthening of the gut barrier function, modulation of cytokines and inflammatory response, production of potentially neuroprotective metabolites, and HPA regulation. Preclinical research emphasized a pronounced shift away from macrophage-produced cytokines to T-lymphocyte-produced cytokines, a reduction in circulating lipopolysaccharide endotoxins, and a marked reduction in transcription of hippocampal genes related to HPA regulation.†<sup>12</sup>

### Probiotics and the Gut-Brain Axis

The gut-brain axis refers to the bidirectional communication network between the central and autonomic nervous systems and the intestines. Gut-brain communications are mediated by the immune system, endocrine connections such as the hypothalamic-pituitary-adrenal (HPA) axis, and neural pathways involving the enteric nervous system. The gut microbiota is now known to play a pivotal role in gut-brain communications. It is a complex interaction whereas the microbiota engages locally with intestinal cells as well as communicating directly with the central nervous system through neuroendocrine, immune, and metabolic pathways.<sup>13</sup> Research into gut-brain mechanisms is rapidly expanding our understanding and serves to inform the development of targeted probiotic formulations.†



**SUGGESTED USE:** Dissolve the contents of 1 sachet in approximately 3 to 4 oz. of lukewarm water or mix with a dairy product such as milk or yogurt. Gently stir before consuming. Take on an empty stomach in the morning, before bed, or as directed by a healthcare professional. Suitable for children from the age of 1 year. **Caution:** When antibiotics are used, wait 2 to 3 hours before using this product. If you are pregnant, nursing, have a medical condition, or taking prescription drugs, consult your healthcare professional before using this product. Keep out of the reach of children.

### Supplement Facts

Serving Size 1 Sachet (Approx. 2 g) • Servings Per Container 30

Amount Per Sachet	% Daily Value
Calories	5
Total Carbohydrate	2 g <1%**
Sodium	70 mg 3%
Potassium (as potassium chloride)	35 mg <1%
Ecologic BARRIER Probiotic Blend (5 billion CFU)	2 g
<i>Lactobacillus casei</i> W56	*
<i>Lactobacillus acidophilus</i> W37	*
<i>Lactobacillus brevis</i> W63	*
<i>Lactococcus lactis</i> ssp. <i>lactis</i> W58	*
<i>Bifidobacterium animalis</i> ssp. <i>lactis</i> W52	*
<i>Lactococcus lactis</i> ssp. <i>lactis</i> W19	*
<i>Lactobacillus salivarius</i> W24	*
<i>Bifidobacterium bifidum</i> W23	*
<i>Bifidobacterium lactis</i> W51	*

\*Daily Value not established.

\*\*Percent Daily Values are based on a 2,000 calorie diet.

Other ingredients: Maize starch, maltodextrin, inulin, polydextrose, vegetable protein, magnesium sulfate, and manganese sulfate.

### GBX 30 sachets



## Target gb-X Formulation

Function	<i>L. casei</i> W56	<i>L. acidophilus</i> W37	<i>L. brevis</i> W63	<i>Lc. lactis</i> W58	<i>B. lactis</i> W52	<i>Lc. lactis</i> W19	<i>L. salivarius</i> W24	<i>B. bifidum</i> W23	<i>B. lactis</i> W51
Epithelial barrier function strengthening†		X	X			X		X	
Cytokine modulation†	X			X	X			X	X
Mast cell integrity support†	X				X		X	X	
Circulating lipopolysaccharide suppression†		X				X		X	

† These statements have not been evaluated by the Food and Drug Administration. These products are not intended to diagnose, treat, cure, or prevent any disease.



## Stress & Mood Support (cont)

### SAMe 200

A versatile nutrient to support mood regulation, joint, and liver function<sup>†</sup>

A modulator of neurochemical activity, and the most active endogenous methyl donor, S-Adenosyl L-Methionine (SAMe) supports a host of energy-requiring processes within the body. Supporting roles include folate and monoamine metabolism, membrane function and neurotransmission, and synthesis of hormones and neurotransmitters required for healthy mood, cognition, and emotional well-being. In numerous controlled clinical trials, SAMe has been shown to support joint comfort and mobility; stimulate the synthesis of proteoglycans by cartilage-secreting cells in joints; support cellular detoxification and liver function; and promote healthy bile flow during pregnancy.<sup>†</sup> This product provides pharmaceutical grade, stabilized SAMe, manufactured under low-temperature and low-humidity conditions. An enteric tablet coating is applied to further ensure a biologically active product. Each tablet contains 200 mg of elemental SAMe.

**SUGGESTED USE:** 1 tablet, 1 to 6 times daily on an empty stomach or as directed by a healthcare professional. **Caution:** Individuals being treated for neurological conditions, including those using prescribed medications such as antidepressants, serotonin reuptake inhibitors, and monoamine (MAO) inhibitors, should consult their healthcare professional before using this product. Individuals with bipolar disorder or manic depression should not take SAMe unless under medical supervision.

Supplement Facts		
Serving Size 1 Tablet		
Amount Per Tablet		% Daily Value
S-Adenosyl L-Methionine (from 400 mg of S-Adenosyl L-Methionine tosylate disulfate)	200 mg	*

\*Daily Value not established.

Other ingredients: Cellulose, mannitol, sodium starch glycolate, silicon dioxide, glyceryl behenate, magnesium stearate, enteric coating (methacrylate copolymers), titanium dioxide, magnesium silicate, triethylcitrate, riboflavin, glycerol palmitostearate, and medium chain triglycerides.

**SAM 30 tablets**

**SAM60 60 tablets**



### Amino Acid Complete

Comprehensive formula to support adequate protein absorption during pregnancy<sup>†</sup>

A comprehensive, hypoallergenic source of essential amino acids. Designed to meet the needs of individuals who require additional amino acids for protein support during pregnancy. This formulation of 20 essential and non-essential “L-form” amino acids uses the highest-quality, pharmaceutical grade, crystalline amino acids in their “free” form to ensure maximum bioavailability and tolerance. Amino Acid Complete supports GI health, the repair and rebuild of healthy muscle and connective tissue, and provides essential nutrients for healthy hair, skin, and nails.<sup>†</sup>

**SUGGESTED USE:** 1 capsule, 1 to 6 times daily or as directed by a healthcare professional.

Supplement Facts			
Serving Size 1 Capsule			
Amount Per Capsule	% Daily Value	Amount Per Capsule	% Daily Value
Glycine	55 mg *	L-Phenylalanine	24 mg *
L-Leucine	48 mg *	L-Threonine	24 mg *
L-Valine	42 mg *	L-Proline	21 mg *
L-Glutamic Acid	40 mg *	L-Histidine	14 mg *
L-Lysine	28 mg *	Taurine	20 mg *
L-Isoleucine	36 mg *	L-Arginine	18 mg *
L-Cysteine	26 mg *	L-Aspartic Acid	15 mg *
L-Alanine	35 mg *	L-Methionine	15 mg *
L-Tyrosine	34 mg *	L-Glutamine	12mg *
L-Serine	30 mg *	L-Asparagine	4 mg *

\*Daily Value not established.

Other ingredients: Vegetarian capsule (hydroxypropyl methylcellulose, water).



**V503-15 150 capsules**

<sup>†</sup>These statements have not been evaluated by the Food and Drug Administration. These products are not intended to diagnose, treat, cure, or prevent any disease.



# Musculoskeletal & Connective Tissue

## Collagen Type II

### Natural, hydrolyzed type II collagen

Collagen Type II is hydrolyzed type II collagen that provides a complex matrix of elements (collagen type II, chondroitin sulfate, and hyaluronic acid) that support joint and skin health.<sup>†</sup> As we age, the body's ability to make the collagen slows down. Collagen Type II is a concentrated bioavailable and bioactive formula of naturally occurring molecules that play a vital role in the body's ability to maintain healthy connective tissues, flexible joints, and youthful-looking skin.<sup>†</sup> Together these elements provide multidimensional nutritional support that helps the body more effectively support connective tissue health. Collagen Type II is non-GMO and free of gluten, soy, shellfish, fish, egg, milk, peanuts, and sugar.<sup>†</sup>

**SUGGESTED USE:** 2 capsules, 2 to 3 times daily or as directed by a healthcare professional.



### Supplement Facts

Serving Size 2 Capsules

Amount Per 2 Capsules		% Daily Value
BioCell Collagen <sup>††</sup>	1,000 mg	*
Hyaluronic Acid	100 mg	
Chondroitin Sulfate	200 mg	
Hydrolyzed Collagen Type II	600 mg	

\*Daily Value not established.

Other ingredients: Vegetarian capsule (hydroxypropyl methylcellulose, water).

<sup>†</sup>BioCell Collagen<sup>®</sup> is a registered trademark of BioCell Technology LLC, Newport Beach, California USA. (Protected by U.S. and International patents).



### CP8571 60 capsules



**Contact us and order today**

[klaire.com](http://klaire.com) | 888 488 2488

Available through licensed healthcare professionals.

<sup>†</sup>These statements have not been evaluated by the Food and Drug Administration. These products are not intended to diagnose, treat, cure, or prevent any disease.

## PRODUCT PROSPECTUS

1. Jiménez E, et al. Oral administration of *Lactobacillus* strains isolated from breast milk as an alternative for treatment of infectious mastitis during lactation. *Appl Environ Microbiol.* 2008;74(15):4650-4655.
2. Rescigno M, et al. Dendritic cells express tight junction proteins and penetrate gut epithelial monolayers to sample bacteria. *Nat Immunol.* 2001;2(4):361-367.
3. Maldonado-Lobón JA, et al. *Lactobacillus fermentum* CECT5716 Reduces *Staphylococcus* load in the breast milk of lactating mothers suffering breast pain: a randomized controlled trial. *Breastfeed Med.* 2015;10(9):425-432.
4. Arroyo R, et al. Treatment of infectious mastitis during lactation: antibiotics versus oral administration of *Lactobacilli* isolated from breast milk. *Clin Infect Dis.* 2010;50(12):1551-1558.
5. Gil-Campos M, et al. *Lactobacillus fermentum* CECT5716 is safe and well tolerated in infants of 1 to 6 months of age: a randomized controlled trial. *Pharmacol Res.* 2012;65(2):231-238.
6. Maldonado-Lobón JA, et al. Long-term safety of early consumption of *Lactobacillus fermentum* CECT5716: a 3-year follow-up of a randomized controlled trial. *Pharmacol Res.* 2015;95-96:12-19.
7. Maldonado J, et al. Human milk probiotic *Lactobacillus fermentum* CECT5716 reduces the incidence of gastrointestinal and upper respiratory tract infections in infants. *J Pediatr Gastroenterol Nutr.* 2012;54(1):55-61.
8. Olivares O, et al. Oral intake of *Lactobacillus fermentum* CECT5716 enhances the effects of influenza vaccination. *Nutrition.* 2007;23(3):254-260.
9. Bron PA, et al. Can probiotics modulate human disease by impacting intestinal barrier function? *Br J Nutr.* 2017 Jan 14; 117(1):93-107.
10. Wallace CJK, Milev R. The effects of probiotics on depressive symptoms in humans: a systematic review. *Ann Gen Psychiatry.* 2017;16:14.
11. Steenbergen L, et al. A randomized controlled trial to test the effect of multispecies probiotics on cognitive reactivity to sad mood. *Brain Behav Immun.* 2015 Aug;48:258-64.
12. Abildgaard A, Elfving B, Hokland M, Wegener G, Lund S. Probiotic treatment reduces depressive-like behaviour in rats independently of diet. *Psychoneuroendocrinology.* 2017 May;79:40-48.
13. Carabotti M, Scirocco A, Maselli MA, Severi C. The gut-brain axis: interactions between enteric microbiota, central and enteric nervous systems. *Ann Gastroenterol.* 2015 Apr-Jun; 28(2): 203-209.

---

### SFI USA

795 Trademark Drive | Reno, NV 89521 USA  
P 775 850 8800 F 775 850 8810 TF 888 488 2488  
[klaire.com](http://klaire.com)

© Copyright 2018 SFI USA | Reno, NV | All rights reserved.



PNPROS180920.01